



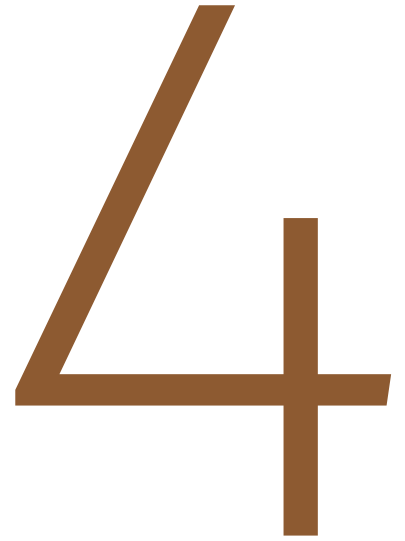
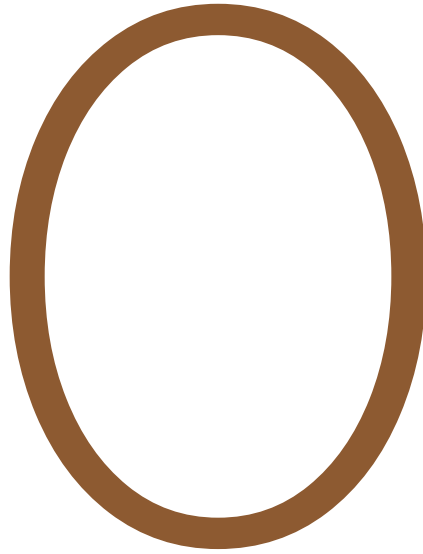
CUPRA
LEON





BEAUTY

EXTERIOR STYLING
INTERIOR STYLING
COLOURS
WHEELS
UPHOLSTERIES
CUSTOMISATION OFFER



POWER

E-HYBRID
PETROL ENGINE
CUPRA LEON VZ
CUPRA LEON



INNOVATION

TECHNOLOGY
SAFETY
CUPRA CONNECT
COMPLETE CUSTOMISATION

42

56



TECHNICAL

ENVIRONMENTAL
STANDARD & OPTIONAL
EQUIPMENT
ACCESSORIES
ENGINE SPECS

EXTERIOR STYLING





↓ *HIGH-PERFORMANCE
STYLE*

Aerodynamic, lightweight and strong – not to mention stylishly sophisticated with a matching copper finish to give total performance.





↑ *PROGRESSIVE,
DYNAMIC AND
UNIQUE*

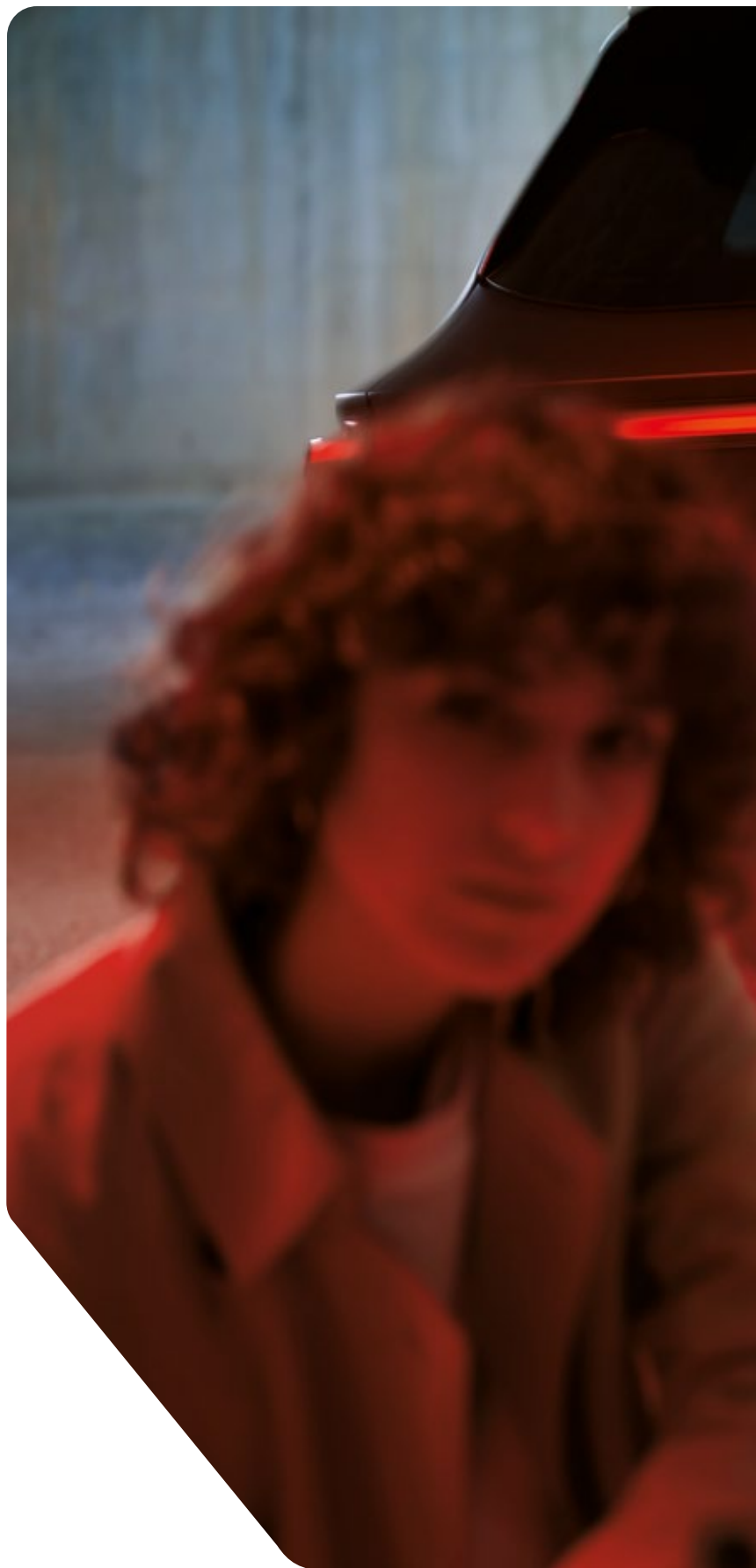
A bolder, more daring front grille and enlarged air intakes with contrasting Dark Chrome details. And for functional aesthetics, full LED headlights and fog lamps are integrated into the front bumper.

→ *CUPRA INFINITE
LIGHT*

Sportive on all sides with a rear diffuser and matching wing mirrors, to enhance performance. Plus, the CUPRA Infinite rear light to create boundless sophistication.

→ *SMALL DETAILS
MAKE A BIG
DIFFERENCE*

With dynamic rear indicators and the CUPRA welcome light, which projects the CUPRA Logo onto the floor when you unlock your car.





INTERIOR STYLING





↓ *UNIQUE DETAILS
THAT COUNT*

Optimise your drive experience with enhanced lateral support. The CUP Bucket seats* with race-inspired curvature, reinforce comfort on all roads. And premium sportive design, with rear cover in Carbon Fibre, with stylish cooling vents and sophisticated Copper stitching for a timeless look. Available in a choice of Genuine Black Leather or Genuine Petrol Blue Leather.





↑ *INNER POWER.
OPTIMUM
CONTROL*

The CUPRA steering wheel comes in leather with part Dark Aluminium detailing and copper stitching. An ambient light stretching across the dash with adjustable colour intensity provides a stylish finish and also doubles as a safety alert.





DETAILS

↓ *PETROL BLUE MATTE⁴*



↓ *MAGNETIC TECH MATTE⁴*



- ¹Soft
- ²Metallic
- ³Special Metallic
- ⁴Matte

→ NEVADA WHITE²



↓ CANDY WHITE¹



↓ *MAGNETIC TECH²*



↓ *MIDNIGHT BLACK²*



- ¹ Soft
- ² Metallic
- ³ Special Metallic
- ⁴ Matte

→ *DESIRE RED³*



→ *GRAPHENE GREY³*





↑ 19" PERFORMANCE SPORT
BLACK AND COPPER VZ

↓ 19" AERO SPORT
BLACK AND SILVER¹ VZ



↑ 19" PERFORMANCE SPORT
BLACK AND SILVER VZ

CUPRA Leon L
 CUPRA Leon VZ VZ
 Standard
 Optional

¹Not compatible with Brembo brakes.



→ 19" ALLOY SPORT
BLACK AND SILVER **vz** **L**

↓ 18" ALLOY SPORT
BLACK AND SILVER **L**



↓ 19" AERO SPORT
BLACK AND COPPER¹ **vz**





↑ TEXTILE SHARP
SPORT SEATS L



→ GENUINE PETROL BLUE
LEATHER BUCKET L VZ

CUPRA Leon L
 CUPRA Leon VZ VZ
 Standard ■
 Optional ■



← GENUINE BLACK LEATHER BUCKET L V2



→ TEXTILE SHARP BUCKET V2 L

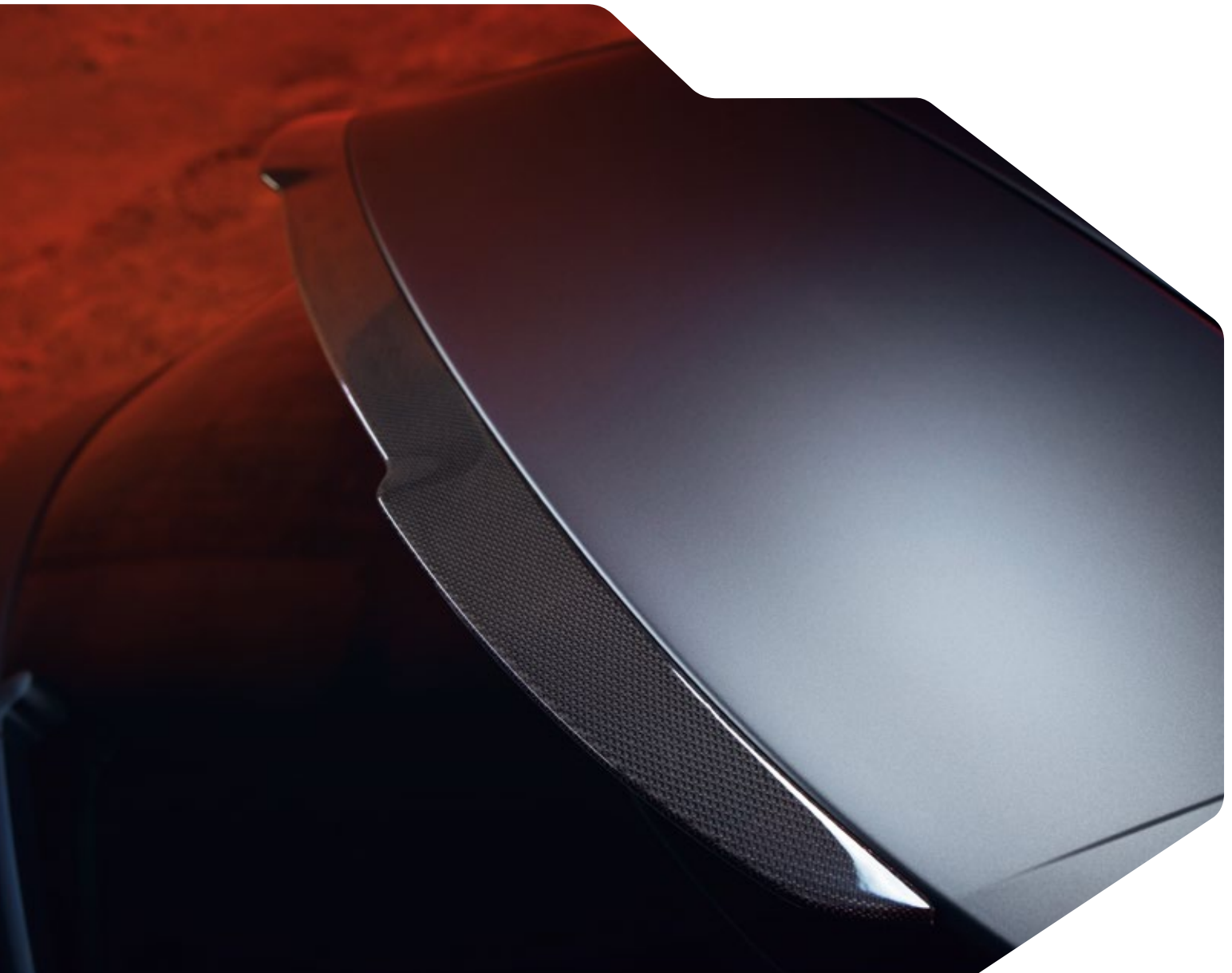
Standard S
Optional O

↓ *COPPER CARBON
FIBRE SPOILER*

Drive in pure sportive style, and add a matching Copper Carbon fibre spoiler to your setup.

→ *COPPER CARBON
FIBRE WING
MIRRORS*

Top off your new CUPRA Leon with Copper Carbon fibre wing mirrors. A true reflection of the CUPRA spirit.





↘ *DARK ALUMINIUM
PEDALS AND
FOOTREST*

Exclusive to the CUPRA Leon 5D,
Dark Aluminium pedals with matching
footrest combine rubber to provide
extra grip and enhance sportive
driving with a sophisticated twist.





POWER



↓ *e-HYBRID*
PERFORMANCE

Empowered by freedom.
The CUPRA Leon e-HYBRID gives
you complete choice. Harness
boundless range and full power.
Or switch to e-Mode and enjoy
emission-free driving.





↑ *THE FREEDOM
TO EXPLORE*

Cruise the city with a 60 km* electric range and recharge at home in approximately 3h 40 min with the CUPRA Charger. When you want to explore further afield, automatically combine both engines for a total range of 690 km.

↑ *DRIVE FOR OTHERS.
DRIVE FOR YOURSELF*

With the option to drive conscientiously using the electric engine. Or at full, combined power of up to 245 hp.

* The accurate range for your vehicle will vary according to a number of different factors which include the route, weather conditions, vehicle load (occupants + luggage), battery age and condition, optional equipment (alloys, tyres, etc.), the use of peripheral energy consumption systems such as heating, air conditioning and heated seats, as well as your driving style.

The indicated range has been calculated in compliance with WLTP standards, which set out test conditions applicable to all car manufacturers to ensure the comparability of these tests for all vehicles.

↓ *ROOM FOR IT ALL
WITH UP TO 1600L*

Ample space for all the family, with 1,600l in the petrol version and 1,450l in the e-HYBRID. Plus, a stylish rear cabin that allows all of your passengers to travel in pure comfort en route. Fix a baby seat securely in the back seats and enjoy the added comfort of arm rests.

↓ *FILLED WITH
INTERIOR LIGHT*

Bring the outside in and make the most of those glorious days with the expansive panoramic sunroof.





↑ *BOUNDLESS
POTENTIAL*

A bigger boot for bigger challenges. With hands-free access and a 425l capacity, perfect for family adventures.

→ *PETROL
PERFORMANCE*

Go from 0-100 km/h in just 4.9 seconds in the CUPRA Leon Sportstourer, with 4WD Technology, twin exhaust pipes and a formidable 310 hp petrol engine.



↑ *PURE,
SPORTING
POWER*

The CUPRA Leon 5D petrol version has a powerful 300 hp engine, taking you from 0-100 km/h in 5.7 seconds.

*Not available for 18" wheels. Not compatible with 204 HP e-HYBRID engine.



↓ *EXCLUSIVE
BREMBO BRAKES*

A petrol exclusive, fitted with Brembo brakes* with sport uprights for enhanced stopping power.





CUPRA LEON VZ

FOR THOSE WHO TAKE THE ROAD LESS TRAVELLED. THE CUPRA LEON VZ GIVES YOU A RANGE OF HIGH-PERFORMANCE POWERTRAIN OPTIONS, STARTING FROM 245HP. COMPLETE WITH 19" AEROWHEELS FOR A SUPERIOR EXPERIENCE WHEREVER YOU'RE HEADING. PLUS, A 12" NAVIGATION SYSTEM AS STANDARD WITH ALL THE LATEST AUTONOMOUS ASSISTANTS FOR A SAFER, MORE ENJOYABLE EXPERIENCE WHILE DRIVING.

THE CUPRA LEON VZ EVEN GIVES YOU THE OPTION OF ADVANCED, PERFORMANCE SUPPORTING BUCKET SEATS SO YOU CAN ENJOY OPTIMUM RACING COMFORT.



✓ *CUPRA LEON
SPORTSTOURER VZ*

The truest expression of raw power, enhanced by modern technology and maximum space. The CUPRA Leon Sportstourer VZ offers a range of high-performance powertrain options to give you a high-octane experience on any road. Autonomous driving technology and optional Matrix LED headlights enhance safety and visibility, so you can focus on absolute performance.





↑ CLOSER CONTROL

With integrated drive mode and start engine buttons that allow you to modify and calibrate your setup, the CUPRA Steering wheel is leather finished for enhanced comfort and style: giving you maximum control right at the tip of your fingers.

↘ HIGHER PERFORMANCE

Enjoy pure style, sophistication and a smoother ride overall with 19" Aerowheels with a matching copper finish to give total performance to give you increased efficiency on any road.





CUPRA LEON

DARING AND DYNAMIC, THE NEW CUPRA LEON OFFERS A RANGE OF POWERTRAIN, STARTING FROM 150HP SO YOU CAN ENJOY A BESPOKE DRIVING EXPERIENCE. WITH OPTIONAL 18" ALLOY WHEELS IN SPORT BLACK AND COPPER* TO PROPEL YOU POWERFULLY FORWARD.

ON THE INSIDE, THE CUPRA LEON HAS COMFORTABLE TEXTILE SPORTS SEATS. COMPLETE WITH A USER-ORIENTATED DASHBOARD AND OPTIONAL 12" TOUCHSCREEN WITH NAVI SYSTEM TO OPTIMISE THE DRIVING EXPERIENCE. PLUS, THE ICONIC WRAPAROUND LED AMBIENT LIGHT.

*18" Alloy wheels in Sport Black and Copper also include: Midnight Black roof spoiler, and side skirt (depending on engine). Black Interior roof recommended.

✓ FOLLOW YOUR IMPULSE

Sporty, comfortable and more spacious. Increase your driving passion in the CUPRA Leon Sportstourer, with a panoramic sunroof and high-powered exhaust pipes in timeless Dark Aluminium, the perfect complement to the roof spoiler in Midnight Black. Add to this a range of powertrain options starting at 150hp and upwards, and the CUPRA Leon Sportstourer truly lets you feel the road in your own way.



*18" Alloy wheels in Sport Black and Copper also include: Midnight Black roof spoiler, and side skirt (depending on engine). Black Interior roof recommended.



↑ *A SUPERIOR
EXPERIENCE*

Ride in complete comfort. The CUPRA Leon comes with sport textile seats and a user-oriented dashboard with an optional Dark Aluminium pedals and matching footrest.

↘ *MOVING
IN STYLE*

Embrace a next-level driving experience with your choice of exclusive 18" Alloy wheels in Sport Black & Copper* and side skirts in Dark Aluminium.







INNOVATION



THE CUPRA LEON HAS BEEN AWARDED A 5-STAR EURO NCAP SAFETY RATING.



↑ OPTIMUM COMMAND

The CUPRA Steering wheel in leather with integrated drive mode buttons gives you total control at your fingertips. Start and stop the engine at the touch of a button. And shift up and down through the gears without taking your hands off the wheel.

* Available from w.40/22.



↗ MATRIX LED TECHNOLOGY

Built to increase safety and visibility when driving at night. Matrix LED* let you drive with your high beams on even when others are around you. The light beam is divided into 8 segments and a central camera detects the position of other vehicles. The system turns off the segment of your headlight that would otherwise dazzle the other driver, while keeping the rest of the segments on.

The technology also prevents dazzling caused by light bouncing off reflective surfaces like traffic signs so that you can drive with absolute precision and ease.

↓ 12" TOUCHSCREEN

Staying in control is easier than ever. The voice controlled 12" Navi System touch screen allows you to customise the information you need into 3 accessible panels.

Choose from 4 distinct driving profiles. To make the most out of your CUPRA Leon, you can access CUPRA Mode instantly by holding down the drive mode button on the satellite steering wheel, this will give you a sportier driving experience.



→ *TRAFFIC
JAM ASSIST*

Traffic Jam Assist automatically controls braking according to what's happening ahead, while keeping you in the centre of the lane. Very useful in stop-start traffic.

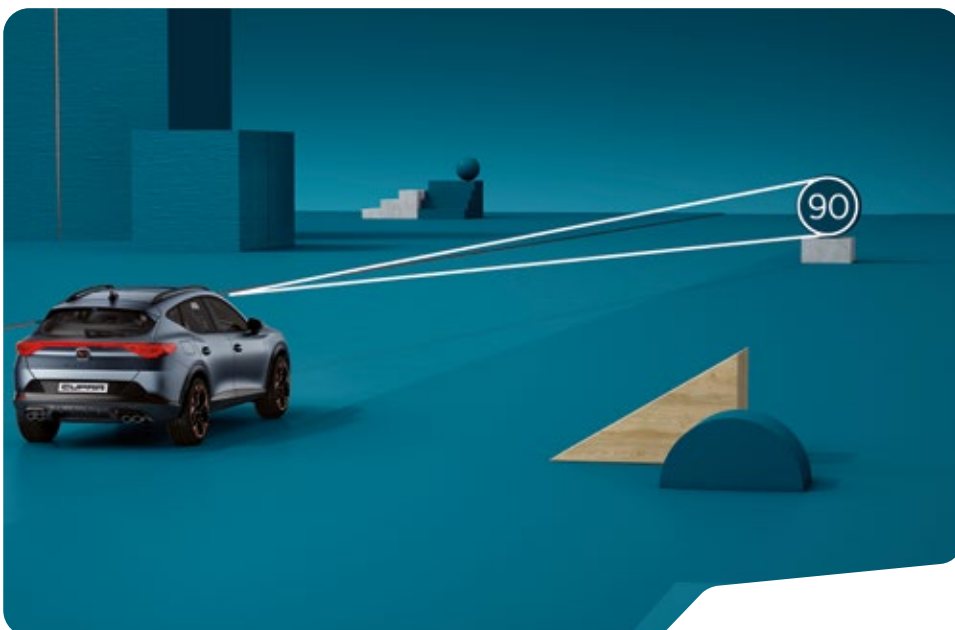


← *ADAPTIVE
CRUISE
CONTROL
PREDICTIVE*

Sensors monitor traffic up ahead and adjust your speed accordingly. Keeping you moving forward, safely and accident free.

→ *SIDE &
EXIT ASSIST*

Exit Assist warns of approaching traffic from behind and activates a signal in your wing mirrors, helping you to change lanes safely.



← *TRAFFIC
RECOGNITION
SYSTEM*

Traffic Sign Recognition detects road signs and displays speed limits on your Infotainment system, preventing you from exceeding it.

CUPRA CONNECT

ALWAYS CONNECTED, TO YOUR CAR AND TO THE WORLD AROUND YOU, ANYWHERE AND AT ANY TIME VIA THE CUPRA CONNECT APP OR ON YOUR CUPRA INFOTAINMENT SYSTEM. DISCOVER A RANGE OF ONLINE AND CONNECTED SERVICES THAT WILL TRANSFORM YOUR EXPERIENCE.



↑ REMOTE ACCESS SERVICES

Spot your car in the crowd, lock and unlock remotely, check your vehicle's status and much more.



↑ SAFETY AND SERVICE PACK

With Emergency Call, assisting you automatically in case of an accident.

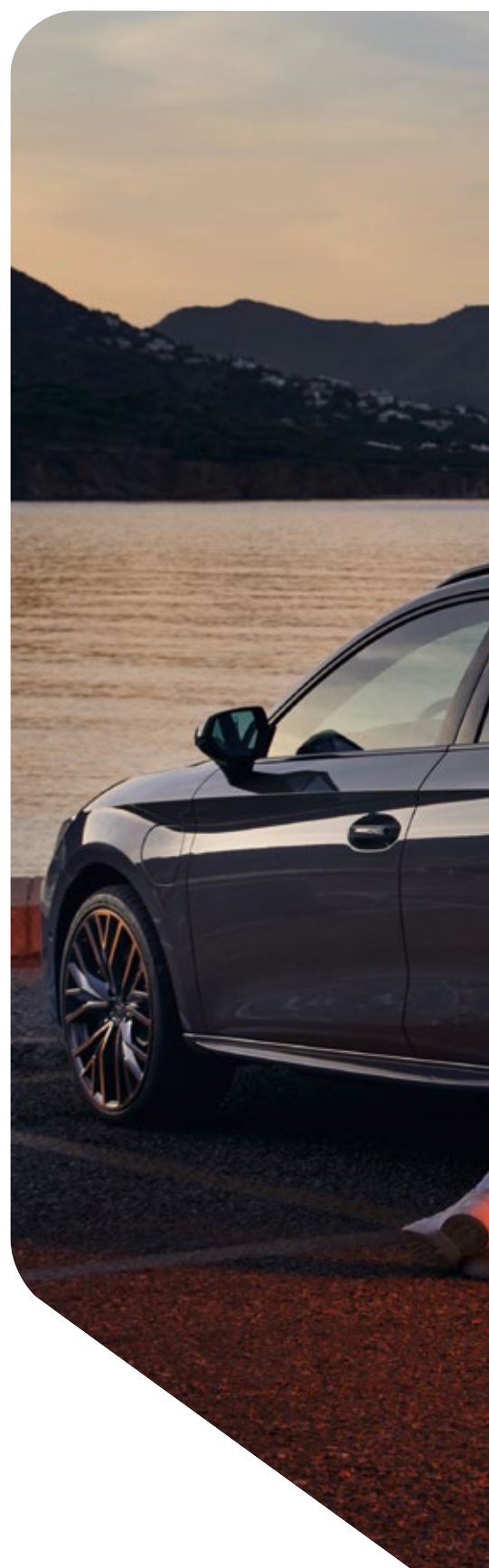
↘ ONLINE INFOTAINMENT SERVICES

See real-time traffic updates and optimise your routes on the go.



COMPLETE CUSTOMISATION

SEIZE THE POWER TO CONVEY YOUR INDIVIDUAL STYLE, WHETHER FOR FUNCTION, PROTECTION OR SIMPLY JUST ENJOYMENT. CHOOSE TO MOVE IN A WAY THAT ECHOES WHO YOU ARE AND WHERE YOU ARE GOING. AFTER ALL, IT'S THE SMALLER THINGS IN LIFE THAT MAKE IT WORTH THE RIDE.







↑ *SKI RACK*

Heading to the snow? The rack carries up to 6 pairs of skis or 4 snowboards, with soft rubber to protect your gear. It requires no additional tools to install and fits most roof bars.

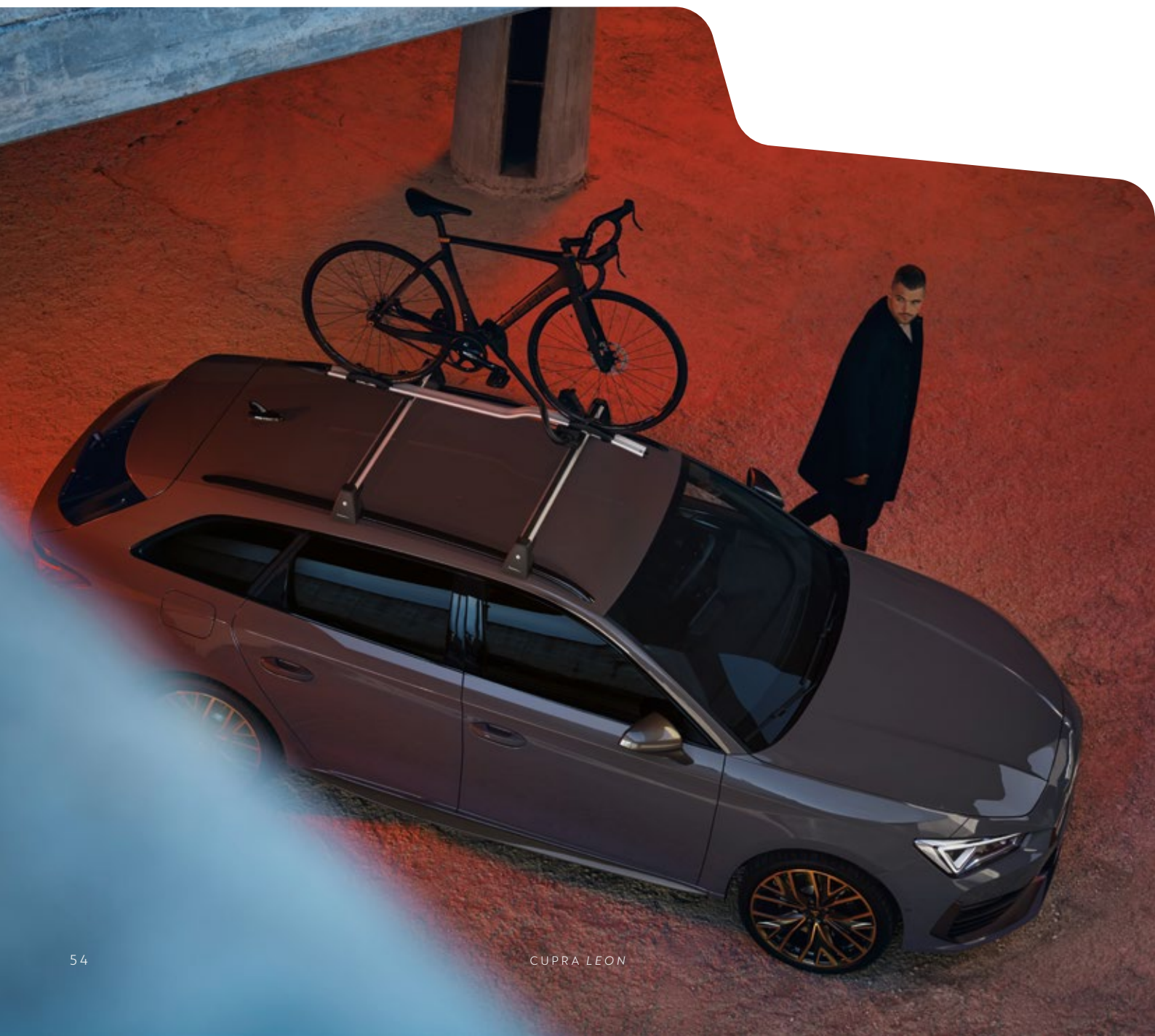
↓ *SURF RACK*

Time to chase the waves. The surf rack adapts perfectly to the size and shape of your board for effortless loading or unloading and allows you to carry two boards along with their masts.



↓ *BIKE RACK*

Take to the trail by loading up your bike on the specially designed bike roof rack. Fastening is straightforward and allows you to swiftly fit your bike into position on your roof.





↑ *TOWING BRACKET
BICYCLE CARRIER*

Cycling reimagined. Share the adventure by attaching up to 3 bikes at a time. The carrier secures easily onto the steel tow ball, allowing you more time for exploration on 2 wheels.

ENVIRONMENTAL INFORMATION

LIGHTING

Headlamps and rear lamps are 100% LED: reducing significantly power consumption and increasing life and effectiveness of the lamps.

RENEWABLE AND RECYCLED MATERIALS

Presence of 15 kg of plastic of recycled origin (6.5% vs. total vehicle plastic) and use of renewable materials (cotton, natural rubber and cellulose) in different parts of the vehicle.

SEATS

The use of new PUR foam formulations reduces the emission of volatile organic compounds (VOCs) in the cabin interior by up to 50%.

BRAKES

Incorporation of RBO technology (which reduces the residual brake torque between the brake pad and disc), permits an emissions reduction of up to 1g CO₂/100 km.

AERODYNAMICS

Improved vehicle aerodynamics, thanks to optimised design of the bodywork, wheels and cooling system.

BODYWORK

Use of ultra-high strength steel, which together with hot stamping technology, permits a reduction in thicknesses and weight without loss of performance.

ACOUSTICS

All versions incorporate a double-seal system on the doors, which reduces noise levels and enhances comfort.

TYRES

Low rolling resistance tyres provide a reduction of the rolling resistance coefficient.



MANUFACTURING PROCESS

In the period from 2010 to 2021 we have reduced the CO₂ emissions per manufactured car by 61%, while also cutting the energy demand per car by 17%. Additionally, we've achieved a 29% saving in water consumption and a 75% reduction in waste generated per car.

The re-usage of the sludge generated in our Paint Shop as base material for the construction of paved roads allows us to reduce the amount of wasted generated in our productive process and reduce the use of prime materials for the construction.





ENVIRONMENTAL INFORMATION

ENGINES

e-HYBRID: The all-electric motor in the e-HYBRID engine enables zero emission driving in electric mode.

INTELLIGENT HYBRID

This function make it easy for the driver to conserve and optimise electric power based on the planned route.

ZERO EMISSION

Indicator that displays the distance driven with zero emissions using e-Mode.

E-RANGE MONITOR

Informs the driver of the increase in range of electric-only engine when switching off.

TECHNICAL SPECIFICATIONS

Discover all the technical specifications by engine type, from emissions and consumption data; to performance statistics and transmission types.

Here you'll find all the technical aspects covered so you can make an informed selection when it comes to your CUPRA Leon.





EQUIPMENT CUPRA LEON AND SPORTSTOURER

EXTERIOR

	CUPRA Leon	CUPRA Leon VZ
18" Performance Machined Alloy Wheels	●	-
19" Exclusive Machined Alloy Wheels	○	●
Dark Tinted Rear Windows	●	●
Glossy Black Window Frames	●	●
Glossy Black Roof Rails (Sportstourer only)	●	●
Exterior Mirrors Painted in Dark Aluminium	●	●
Rear Spoiler	●	●
Sports Bumpers	●	●
Welcome Light (Mirror)	●	●
Full LED Lighting:		
- LED Dipped Beam		
- LED Full Beam		
- LED Indicators	●	●
- LED Welcome Lights		
- LED Daytime Running Lights		
- LED Rear Lights with Dynamic Light		
- LED Front Fog Lights with Cornering Function		

INTERIOR

Textile Bucket Seats (Std. KU*BRZ & KU*BUY)	-	●
Textile Standard Seats	●	-
Black Roof Cloth (Std. KU*BRZ & KU*BUY)	-	●
Grey Roof Cloth	●	-
Interior Chrome Detailing	●	●
Metal Pedal Cluster	●	●
Illuminated Scuff Plates in Door	●	●
Wraparound Interior Lighting (Std. KU*BRZ & KU*BUY)	-	●
Reading Lights Front & Rear	●	●
Leather Heated Multi-Function Steering Wheel (Heated for DSG Only)	●	-
Climatronic 3-Zone Air Conditioning	●	●

TECHNOLOGY

Full Digital Cockpit	●	●
Rear Park Distance Control	●	●
Rear View Camera (Std. KU*BRZ & KU*BUY)	○	●
Park Assist (Std. KU*BRZ & KU*BUY)	○	●
Dynamic Chassis Control	-	●
Drive Profile Selection (Not for e-HYBRID)	●	●
Progressive Steering (Std. KU*BRZ & KU*BUY)	-	●
Keyless Entry & Start	●	●
Height Adjustable Front Seats (with Lumbar Adjustment)	●	●
Heated Front Seats (Std. KU*BRZ & KU*BUY)	○	●
Front Differential Lock	●	●
Electronic Parking Brake	●	●
Foldable Heated Door Mirrors	●	●
Convenience Pack:		
- Light & Rain Sensor	●	●
- Coming Home/Leaving Home Lights		
- Auto-Dimming Rear View Mirror		
Electronic Vehicle Immobiliser	●	●

EQUIPMENT CUPRA LEON AND SPORTSTOURER

TECHNOLOGY

	CUPRA Leon	CUPRA Leon VZ
10" Navigation System:		
- 7 Speakers		
- Voice Control		
- CUPRA Connect for Navigation	•	-
- Online Infotainment Apps		
- MapCare (Online Map Updates)		
- Digital Audio Broadcasting (DAB)		
12" Navigation System: (Std. KU*BRZ & KU*BUY)		
- 7 Speakers		
- Voice Control		
- CUPRA Connect for Navigation	○	•
- Online Infotainment Apps		
- MapCare (Online Map Updates)		
- Digital Audio Broadcasting (DAB)		
SEAT CONNECT	•	•
4 USB-C Ports (2 Front + 2 Rear) [Rear ports for charging only]	•	•
Bluetooth (Phone & Media)	•	•
CUPRA Full Link:		
- Wireless Android Auto	•	•
- Wireless Apple CarPlay	•	•
12V Socket in Boot (Sportstourer only)	•	•

SAFETY & SECURITY

Safe & Drive Pack "M": (Std. KU*BRZ & KU*BUY)		
- Predictive Adaptive Cruise Control	○	•
- Light Assist (Auto Highbeam)		
- Traffic Sign Recognition		
Front Assist:		
- Forward Collision Warning	•	•
- Braking reaction to pedestrians, cyclists, and other vehicles		
Lane Assist	•	•
Driver Alert System	•	•
Airbags:		
- Driver & Front Passenger		
- Side Airbag		
- Curtain Airbag	•	•
- Central Airbag		
- Passenger Airbag Deactivation Switch		
Front & Rear Seatbelt Reminder	•	•
i-Size and top tether child seat anchors in rear seats and passenger seat	•	•
Locking Wheel Nuts	•	•

OPTIONAL EQUIPMENT CUPRA LEON AND SPORTSTOURER

ALLOY WHEELS		CUPRA Leon	CUPRA Leon VZ
19" Exclusive 30/1 CUPRA Machined Alloy wheels in Silver	PUW	Opt for KU*BRZ & KU*BUY only	●
19" Exclusive 30/4 CUPRA Alloy wheels in Copper	PYA	-	○
19" Exclusive 30/3 CUPRA Machined Alloy wheels in Sport Black [For 2.0TSI 245hp code changes to PYD]	PYB	-	○
19" Exclusive 30/5 CUPRA Machined Aerowheels in Copper [Not available with PBB]	P8W	-	○
19" Exclusive 30/2 CUPRA Machined Aerowheels in Sport Black [Not available with PBB]	P8V	-	○

SAFETY & SECURITY		CUPRA Leon	CUPRA Leon VZ
Safe & Driving pack L: - Side Assist - Exit Assist - Exit Warning	WDI	○	○
Safe & Driving pack XL: - Side Assist - Exit Assist - Exit Warning - Travel Assist - Emergency Assist - Lane Assist Plus [Only for DSG]	WDL	○	○
Additional Airbags: - Rear Side & Driver Knee	PA7	○	○
Pre-Crash Assist	PAQ	○	○
Alarm System	WAS	○	○

INTERIOR		CUPRA Leon	CUPRA Leon VZ
Black Textile Electric Bucket Seats [Not for KU*BFZ]	WTR	○	○
Black Leather Electric Bucket Seat [Not for KU*BFZ]	W2R	○	○
Petrol Blue Leather Bucket [Not for KU*BFZ]	W2S	○	○

● Standard ○ Optional – Not available

*Adding options to vehicles with higher VRT rates will cause options to increase in cost. Adding optional extras to vehicles can have an impact on the CO₂ & Fuel Consumption of the vehicle. This may in turn change the VRT payable on the vehicle and thus increase the Total Price. Please discuss the addition of options and their impact with your CUPRA Master within our CUPRA Network. Information & pricing subject to change without notice.

OPTIONAL EQUIPMENT CUPRA LEON AND SPORTSTOURER

SPECIAL ITEMS		CUPRA Leon	CUPRA Leon VZ
Boost Pack:			
- 12" Navigation System			
- Heated Front Seats			
- Safe & Drive "M"			
- Black Roof Cloth	P30	○	-
- Vision Plus Pack (Rear Camera, Front & Rear Sensors, Park Assist)			
BeatsAudio™ Premium Sound System:			
- 9 Speakers			
- 1 Sub-woofer			
- 340W Amplifier	PNB	○	○
- Surround Technology			
[Not available for e-Hybrid Vehicles]			
Brembo™ Brake Calipers			
[Not available for e-Hybrid or P8V/P8W, Requires 19" Alloys]	PBB	-	○
CUPRA Super-sports Steering Wheel			
[Standard for 310hp, Requires WDL]	P1V	Opt for KU*BRZ & KU*BUY only	○
Wireless Phone Charger	PB2	○	○
CUPRA Side Skirts	PQ6	Opt for KU*BRZ & KU*BUY only	○
Design Pack:			
- 18" Machined Alloy Wheels in Sport Black/Copper			
- Black Roof Spoiler	PT1/2	○	-
Design Pack:			
- Black Roof Spoiler			
- Side Skirts	PT4	Opt for KU*BRZ & KU*BUY only	○
Mirrors in Carbon Fibre Black	PFE	○	○
Mirros in Carbon Fibre Copper	PFI	○	○
Hands-Free Electric Tailgate (Sportstourer Only)	PCD	○	○
Wraparound Interior Lighting (Std. KU*BRZ & KU*BUY)	PLH	○	●
Panoramic Sunroof	PTC	○	○
PAINT FINISHES		CUPRA Leon	CUPRA Leon VZ
Soft Paint	-	●	●
Metallic Paint	MP1	○	○
Premium Metallic Paint	MP5	○	○
Matt Paint	MP3	○	○

● Standard ○ Optional – Not available

*Adding options to vehicles with higher VRT rates will cause options to increase in cost. Adding optional extras to vehicles can have an impact on the CO₂ & Fuel Consumption of the vehicle. This may in turn change the VRT payable on the vehicle and thus increase the Total Price. Please discuss the addition of options and their impact with your CUPRA Master within our CUPRA Network. Information & pricing subject to change without notice.

ACCESSORIES

<i>PERFORMANCE</i>		REFERENCE
	19" Performance Sport Black and Silver	5FA601025R 1OV
	19" Performance Sport Black and Copper	5FA601025R XEB
	19" Aero Sport Black and Copper	5FA601025L XUJ
	Roof Spoiler - Carbon Fibre	5FA071606
	Roof Spoiler - Copper Carbon Fibre	5FA071640A
	Roof Spoiler - Midnight Black	5FA071640 Y9T

<i>INTERIOR</i>		
	Dark aluminium pedals (automatic)	5FA064205 9DG
	Dark aluminium footrest	5FA071750 9DG
	Dark aluminium pedals (manual)	5FA064200 9DG

<i>MERCHANDISING</i>		
	CUPRA Member box - Size S	5FF087013A
	CUPRA Member box - Size M	5FF087013B
	CUPRA Member box - Size L	5FF087013
	CUPRA Member box - Size XL	5FF087013C

<i>TRANSPORT</i>		
	Electric kit for vehicles without preinstallation	5FA055204
	Tow Bar for PHEVs	5FA092160E
	Tow Bar (not valide for PHEV)	5FA092160A
	Towing bracket bicycle carrier	000071128H
	Towing Bike Rack	000071128K
	Roof Bars	5FA071151 - 5FE071151
	Bike Rack	5F9071128
	Surf Rack	000071120HA
	Ski Rack for 6 pairs or 4 snowboards	000071129T
	Ski Rack for 4 pairs or 2 snowboards	000071129S
	Ski Rack Xtender	000071129R

SAFETY

	REFERENCE
Utility kit CUPRA (1 triangle)	6H3093990
Utility kit CUPRA (2 triangles)	6H3093990A
Security kit CUPRA (1 triangle)	6H3093990B
Security kit CUPRA (2 triangles)	6H3093990C
Warning triangle (2 units)	000093601A
Reflective jacket	000093900SA
Reflective vest	000093056J
LED flashlight	000069690K
Anti-theft screws for rims	000071510A

PROTECTION

CUPRA car cover	6H3061701B - 6H3061701A
CUPRA floor mats - LHD	5FG863011F LOE
CUPRA floor mats - RHD	5FH863011F LOE
CUPRA premium floor mats Petrol Blue - LHD	5FG863011E LOE
CUPRA premium floor mats Petrol Blue - RHD	5FH863011E LOE
CUPRA premium floor mats Carbon Fibre look - LHD	5FG863011D LOE
CUPRA premium floor mats Carbon Fibre look - RHD	5FH863011D LOE
Reversible boot tray	5FA061201A - 5FE061201A
Separation grille	5FE017221
Front mudflaps	5FA075111

INFOTAINMENT

CUPRA Cable 3 in 1	000051444AR
--------------------	-------------

TECHNICAL SPECIFICATIONS

e - HYBRID ENGINE		1.4 TSI e-HYBRID 204 HP (150kW) DSG-6 Start/Stop	1.4 TSI e-HYBRID 245 HP (180kW) DSG-6 Start/Stop
Cylinder/Valve (Total)		4 / 16	4 / 16
Displacement (cc)		1,395	1,395
Cylinder bore and stroke (mm)		74.5 / 80	74.5 / 80
Compression ratio		10	10
Maximum power (kW (PS)/rpm)		150 (204) / 5,000 – 6,000	180 (245) / 5,000 – 6,000
Maximum torque (Nm/rpm)		250 / 1,550 – 3,500	250 / 1,550 – 3,500
Fuel supply system		TSI Direct Injection	TSI Direct Injection
Ignition		Electronic map-controlled ignition	Electronic map-controlled ignition
Atmospheric/Supercharged		Turbo charged	Turbo charged
Fuel type		ROZ 95	ROZ 95
Oil capacity in initial fill (l)		4.5	4.5
Battery (Ah/A)		59 / 320	59 / 320
ELECTRIC ENGINE /CHARGING SYSTEM			
Maximum power (kW (PS))		85 (116)	85 (116)
Maximum torque (Nm)		330	330
Battery type		Li-ion	Li-ion
Battery capacity (kWh)		13	12.8
Charging time AC 2.3kW 0-100% SoC		5h	5h
Charging time AC 3.6kW 0-100% SoC		3h 33 min	3h 33 min
COMBINED SYSTEM			
Maximum power (kW (PS))		150 (204)	180 (245)
Maximum torque (Nm)		350	400

<i>PERFORMANCE</i>		1.4 TSI e-HYBRID 204 HP (150kW) DSG-6 Start/Stop	1.4 TSI e-HYBRID 245 HP (180kW) DSG-6 Start/Stop
		CUPRA LEON CUPRA LEON SP	CUPRA LEON CUPRA LEON SP
	Maximum speed (km/h)	220	225
	Acceleration 0-100 km/h (s)	7.5 7.7	6.7 7.0

<i>FUEL CONSUMPTION</i>		Efficiency Class B - C	Efficiency Class C
		Combined WLTP (l/100)	1.0 - 1.2 1.1 - 1.2

<i>ELECTRIC CONSUMPTION</i>		Efficiency Class B - C	Efficiency Class C
		Electric consumption combined WLTP (kWh/100km)	14.7 - 15.5 15.1 - 15.8
	Electric range WLTP (km)	58 - 62 56 - 61 ¹	55 - 60 57 - 59 ¹

<i>MASS EMISSION</i>		Efficiency Class B - C	Efficiency Class C
		CO ₂ Combined WLTP (g/km)	24 - 27 25 - 28

¹ The accurate range for your vehicle will vary according to a number of different factors which include the route, weather conditions, vehicle load (occupants + luggage), battery age and condition, optional equipment (alloys, tyres, etc.), the use of peripheral energy consumption systems such as heating, air conditioning and heated seats, as well as your driving style.

The indicated range has been calculated in compliance with WLTP standards, which set out test conditions applicable to all car manufacturers to ensure the comparability of these tests for all vehicles.

TECHNICAL SPECIFICATIONS CUPRA LEON

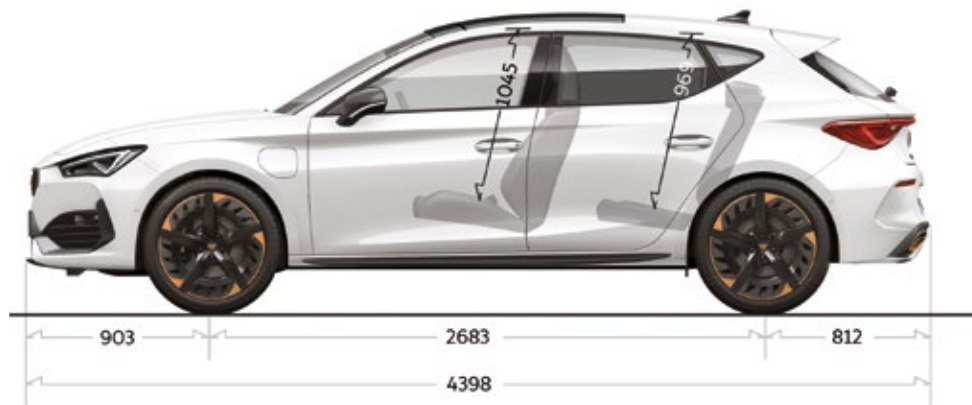


CHASSIS

	1.4 TSI e-HYBRID 204 HP (150kW) DSG-6 Start/Stop	1.4 TSI e-HYBRID 245 HP (180kW) DSG-6 Start/Stop
Front suspension	Independent type McPherson - coil springs - hydraulic shock absorber	
Rear suspension	Multilink axle, coil springs and hydraulic shock absorber	
Steering System	R-EPG Progressive steering	
Turning diameter (m)	10.5 / 11.2	10.5 / 11.2
Brake system	Dual hydraulic circuit and brake system diagonal split with electric brake booster	
Front and rear brake type	Front ventilated disc brakes and rear solid disc brakes	
Front brakes (mm)	306x26	CUPRA brakes: 340x30 Brembo brakes: 370x32
Rear brakes (mm)	272x10	310x22

WHEELS

Rims	7.5Jx18 ET46	8Jx19 ET49
Tyres	225/40 R18	235/35 R19



PACKAGE
(In running without driver)

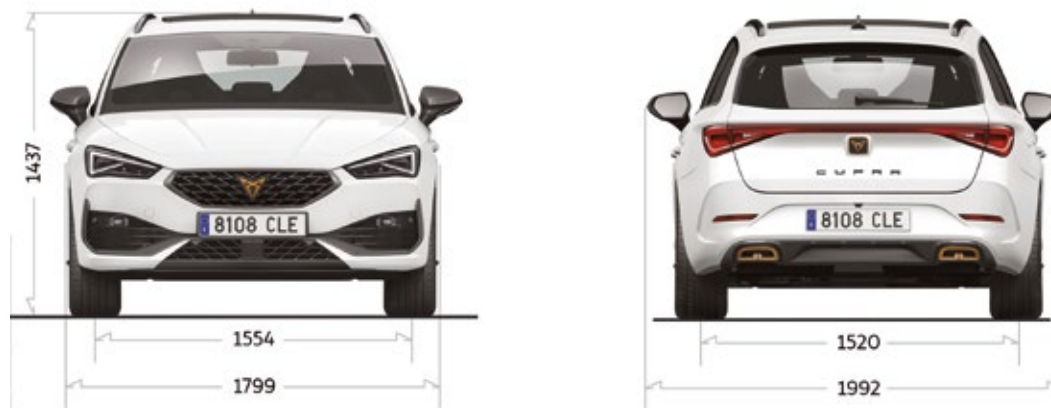
	1.4 TSI e-HYBRID 204 HP (150 kW) DSG-6 Start/Stop	1.4 TSI e-HYBRID 245 HP (180 kW) DSG-6 Start/Stop
Body Type	CUPRA LEON e-HYBRID	CUPRA LEON e-HYBRID
Length/width/height (mm)	4,398 / 1,799 / 1,467	4,398 / 1,799 / 1,467
Wheelbase (mm)	2,682	2,682
Front/Rear track (mm)	1,538 / 1,508	1,538 / 1,508
Boot capacity (l)	270	270
Fuel tank capacity (l)	40	40

WEIGHTS

In running order with driver (kg)	1,638	1,660
In running order with driver (kg) Front/Rear	923 / 715	930 / 730
Maximum weight allowed (kg)	2,070	2,070

TECHNICAL SPECIFICATIONS

CUPRA LEON SPORTSTOURER

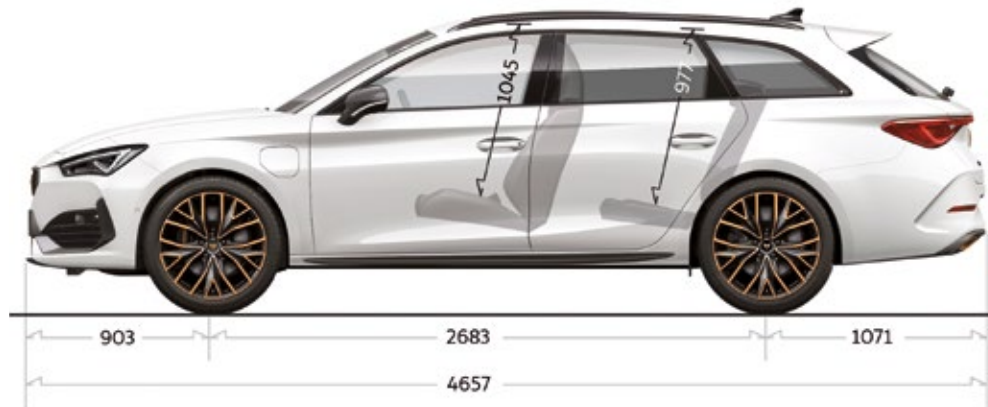


CHASSIS

	1.4 TSI e-HYBRID 204 HP (150kW) DSG-6 Start/Stop	1.4 TSI e-HYBRID 245 HP (180kW) DSG-6 Start/Stop
Front suspension	Independent type McPherson - coil springs - hydraulic shock absorber	
Rear suspension	Multilink axle, coil springs and hydraulic shock absorber	
Steering System	R-EPG Progressive steering	
Turning diameter (m)	10.5 / 11.2	10.5 / 11.2
Brake system	Dual hydraulic circuit and brake system diagonal split with electric brake booster	
Front and rear brake type	Front ventilated disc brakes and rear solid disc brakes	
Front brakes (mm)	306x26	CUPRA brakes: 340x30 Brembo brakes: 370x32
Rear brakes (mm)	272x10	310x22

WHEELS

Rims	7.5Jx18 ET46	8Jx19 ET49
Tyres	225/40 R18	235/35 R19



PACKAGE
(In running
without driver)

	1.4 TSI e-HYBRID 204 HP (150 kW) DSG-6 Start/Stop	1.4 TSI e-HYBRID 245 HP (180 kW) DSG-6 Start/Stop
Body Type	CUPRA LEON SP e-HYBRID	CUPRA LEON SP e-HYBRID
Length/width/height (mm)	4,657 / 1,799 / 1,463	4,657 / 1,799 / 1,463
Wheelbase (mm)	2,681	2,681
Front/Rear track (mm)	1,552 / 1,508	1,552 / 1,508
Boot capacity (l)	470	470
Fuel tank capacity (l)	40	40

WEIGHTS

In running order with driver (kg)	1,689	1,704
In running order with driver (kg) Front/Rear	921 / 768	928 / 776
Maximum weight allowed (kg)	2,090	2,090

TECHNICAL SPECIFICATIONS

PETROL ENGINE

	2.0 TSI EVO 300 HP (221 kW) DSG-7 Start/Stop¹	2.0 TSI EVO 310 HP (228 kW) DSG-7 Start/Stop¹
	CUPRA LEON CUPRA LEON SP	CUPRA LEON SP
Cylinder/Valve (Total)	4 / 16	4 / 16
Displacement (cc)	1,984	1,984
Cylinder bore and stroke (mm)	82.5 / 92.8	82.5 / 92.8
Compression ratio	9.3	9.3
Maximum power (kW (PS)/rpm)	221 (300) / 5,300 – 6,500	228 (310) / 5,450 – 6,500
Maximum torque (Nm/rpm)	400 / 2,000 - 5,200	400 / 2,000 -5,450
Fuel supply system	TSI Direct Injection	TSI Direct Injection
Ignition	Electronic map-controlled ignition	
Atmospheric/Supercharged	Turbo charged	Turbo charged
Fuel type	ROZ 98	ROZ 98
Oil capacity in initial fill (l)	6.6	6.6
Alternator (A)	140ME	140ME
Battery (Ah/A)	68-70 / 380-420	68-70 / 380-420

PERFORMANCE

Maximum speed (km/h)	250	250
Acceleration 0-100 km/h (s)	5.7 5.9	4.9

¹ SOP w.25,2021.

FUEL CONSUMPTION

	2.0 TSI EVO 300 HP (221 kW) DSG-7 Start/Stop¹	2.0 TSI EVO 310 HP (228 kW) DSG-7 Start/Stop¹
	CUPRA LEON CUPRA LEON SP	CUPRA LEON SP
	Efficiency Class C - D	Efficiency Class C - D
Urban (l/100)	8.4 - 8.5 8.5	9.6 - 9.7
Extra Urban (l/100)	5.7 - 5.8	6.5 - 6.6
Combined WLTP (l/100)	6.7 6.7 - 6.8	7.6 - 7.7

MASS EMISSION

	Efficiency Class C - D	Efficiency Class C - D
CO ₂ Urban (g/km)	192 - 194 194 - 195	220 - 221
CO ₂ Extra Urban (g/km)	130 - 132 131 - 133	147 - 150
CO ₂ Combined WLTP (g/km)	152 - 154 154 - 156	174 - 176

TECHNICAL SPECIFICATIONS

CHASSIS

	2.0 TSI EVO 300 HP (221 kW) DSG-7 Start/Stop¹	2.0 TSI EVO 310 HP (228 kW) DSG-7 Start/Stop¹
	CUPRA LEON CUPRA LEON SP	CUPRA LEON SP
Front suspension	Independent type McPherson - coil springs - hydraulic shock absorber	
Rear suspension	Multilink axle, coil springs and hydraulic shock absorber	
Steering System	R-EPS Progressive steering	
Turning diameter (m)	10.5 / 11.2	10.5 / 11.2
Brake system	Dual hydraulic circuit and brake system diagonal split with electric brake booster	
Front and rear brake type	Front ventilated disc brakes and rear solid disc brakes	
Front brakes (mm)	CUPRA brakes: 340×30 Brembo brakes: 370×32	CUPRA brakes: 340×30 Brembo brakes: 370×32
Rear brakes (mm)	310×22	310×22

WHEELS

Rims	8J×19 ET49	8J×19 ET49
Tyres	235/35 R19	235/35 R19

¹ SOP w.25,2021.

PACKAGE
*(In running
without driver)*

	2.0 TSI EVO 300 HP (221 kW) DSG-7 Start/Stop¹	2.0 TSI EVO 310 HP (228 kW) DSG-7 Start/Stop¹
Body Type	CUPRA LEON CUPRA LEON SP	CUPRA LEON SP
Length/width/height (mm)	4,398 / 1,799 / 1,444 4,657 / 1,799 / 1,439	4,657 / 1,799 / 1,439
Wheelbase (mm)	2,689	2,689
Front/Rear track (mm)	1,554 / 1,520	1,554 / 1,520
Boot capacity (l)	380 620	620
Fuel tank capacity (l)	50	55

WEIGHTS

In running order with driver (kg)	1,500 1,551	1,624
In running order with driver (kg) Front/Rear	936 / 564 927 / 624	934 / 690
Maximum weight allowed (kg)	1,970 2,080	1,700

TECHNICAL SPECIFICATIONS

PETROL ENGINE

	2.0 TSI EVO 245 HP (180 kW) DSG-7 Start/Stop¹	2.0 TSI EVO 245 HP (180 kW) DSG-7 Start/Stop¹
	CUPRA LEON	CUPRA LEON SP
Cylinder/Valve (Total)	4 / 16	4 / 16
Displacement (cc)	1,984	1,984
Cylinder bore and stroke (mm)	82.5 / 92.8	82.5 / 92.8
Compression ratio	9.6	9.6
Maximum power (kW (PS)/rpm)	180 (245) / 5.000 - 6.500	180 (245) / 5.000 - 6.500
Maximum torque (Nm/rpm)	370 / 1,600 - 4,300	370 / 1,600 - 4,300
Fuel supply system	TSI Direct Injection	TSI Direct Injection
Ignition	Electronic map-controlled ignition	
Atmospheric/Supercharged	Turbo charged	Turbo charged
Fuel type	ROZ 95	ROZ 95
Oil capacity in initial fill (l)	6.6	6.6
Alternator (A)	140ME	140ME
Battery (Ah/A)	68-70 / 380-420	68-70 / 380-420

PERFORMANCE

Maximum speed (km/h)	250	250
Acceleration 0-100 km/h (s)	6.4	6.6

¹ SOP w.25,2021.

FUEL CONSUMPTION

	2.0 TSI EVO 245 HP (180 kW) DSG-7 Start/Stop¹	2.0 TSI EVO 245 HP (180 kW) DSG-7 Start/Stop¹
	CUPRA LEON	CUPRA LEON SP
	Efficiency Class C - D	Efficiency Class C - D
Urban (l/100)	9.0 - 9.0	9.0 - 9.1
Extra Urban (l/100)	5.3 - 5.4	5.3 - 5.4
Combined WLTP (l/100)	6.6 - 6.7	6.7 - 6.8

MASS EMISSION

	Efficiency Class C - D	Efficiency Class C - D
CO ₂ Urban (g/km)	205 - 206	206 - 207
CO ₂ Extra Urban (g/km)	120 - 122	122 - 124
CO ₂ Combined WLTP (g/km)	151 - 153	153 - 155

TECHNICAL SPECIFICATIONS

CHASSIS	2.0 TSI EVO 245 HP (180kW) DSG-7 Start/Stop ¹	2.0 TSI EVO 245 HP (180kW) DSG-7 Start/Stop ¹	
	CUPRA LEON	CUPRA LEON SP	
Front suspension	Independent type McPherson - coil springs - hydraulic shock absorber		
Rear suspension	Multilink axle, coil springs and hydraulic shock absorber		
Steering System	R-EPS Progressive steering		
Turning diameter (m)	10.5 / 11.2	10.5 / 11.2	
Brake system	Dual hydraulic circuit and brake system diagonal split with electric brake booster		
Front and rear brake type	Front ventilated disc brakes and rear solid disc brakes		
Front brakes (mm)	CUPRA brakes: 340×30 Brembo brakes: 370×32	CUPRA brakes: 340×30 Brembo brakes: 370×32	
Rear brakes (mm)	310×22	310×22	
WHEELS	Rims	7,5J×18 ET46	7,5J×18 ET46
	Tyres	225/40 R18	225/40 R18

PACKAGE
*(In running
without driver)*

	2.0 TSI EVO 245 HP (180kW) DSG-7 Start/Stop¹	2.0 TSI EVO 245 HP (180kW) DSG-7 Start/Stop¹
Body Type	CUPRA LEON	CUPRA LEON SP
Length/width/height (mm)	4,398 / 1,799 / 1,444	4,657 / 1,799 / 1,439
Wheelbase (mm)	2,689	2,689
Front/Rear track (mm)	1,554 / 1,520	1,554 / 1,520
Boot capacity (l)	380	620
Fuel tank capacity (l)	50	50

WEIGHTS

In running order with driver (kg)	1,490	1,536
In running order with driver (kg) Front/Rear	931 / 559	919 / 617
Maximum weight allowed (kg)	1,960	2,070



CUPRA is committed to a policy of continuous product development and reserves the right to make changes to specifications, colours and prices without notice. The information in this brochure can therefore be given as guidance only. While CUPRA makes every effort to ensure that specifications are accurate at the time of publication, you should always check with your authorised CUPRA Partner for the latest information. Due to limitations of the printing process the colours reproduced in this brochure may vary slightly from the actual paint colour and material – 12/2022.